

---

# VOX BLE-MIDI Driver for Windows

---

Adio Air GT/BS can connect wirelessly with Windows computers using Bluetooth low energy (LE) and the VOX BLE-MIDI driver.

## Supported Operating Systems

Windows 11

Windows 10

## Requirements

PC with hardware support for Bluetooth low energy

USB Bluetooth low energy Adapter

The following adapters have been tested and are known to work with the VOX BLE-MIDI Driver:

### Windows 11 and Windows 10

PLANEX COMM. BT-Micro4

GHS2 BT403

TREND NET TBW-106UB

GREEN HOUSE GH-BHDA42

ELECOM LBT-UAN05C2

BUFFALO BSBT5D205BK

IO DATA USB-BT50LE

### Windows 10 only

IOGEAR GBU521

## Compatible Products

Adio Air GT/BS

## For Bluetooth connection

Use Windows Bluetooth settings to connect the computer with the Bluetooth MIDI device.

Connection using the dedicated software that comes with the Bluetooth USB adapter is not supported.

## VOX BLE-MIDI Driver installation/uninstallation

Run Setup.exe and follow the instructions to install.

To uninstall, open Settings > Apps > Installed apps. Find “VOX BLE-MIDI Driver for Windows” in the displayed list, click “...” on the far right, and select “Uninstall”.

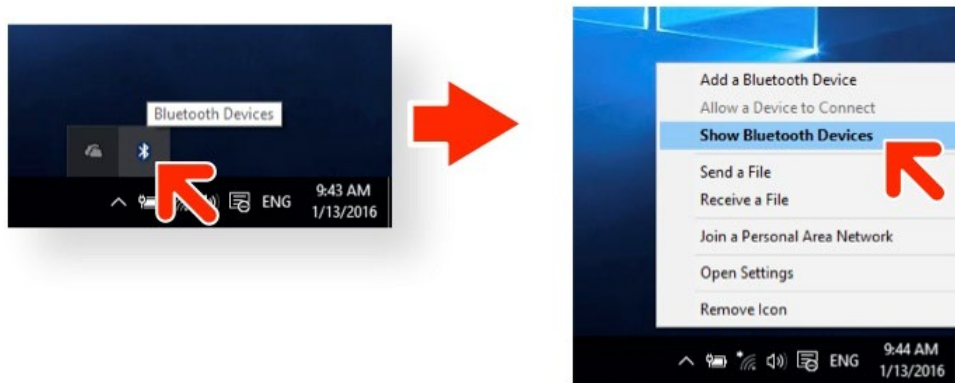
**TIP:** For Windows 10,

open Settings > Apps > Apps & features. Select “VOX BLE-MIDI Driver for Windows” in the displayed list, and click “Uninstall” button.

## Connections

First “Pairing” process is required to connect Windows and a Bluetooth MIDI device for the first time.

1. Turn on the Bluetooth MIDI device, and enable its wireless functionality.
2. Click the Bluetooth icon in the task tray, and choose “Show Bluetooth Devices.”

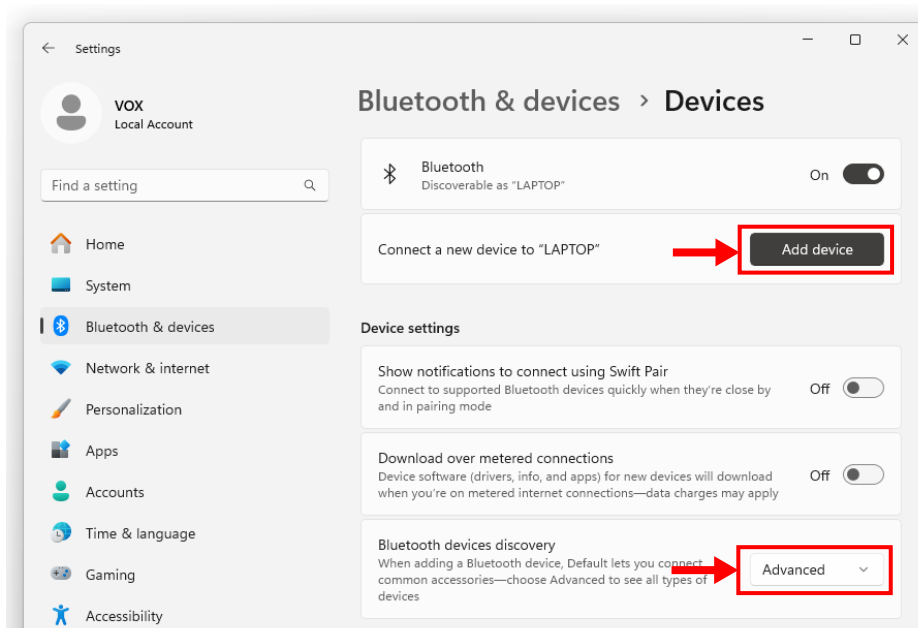


3. The “Bluetooth & devices > Devices” window will be displayed.

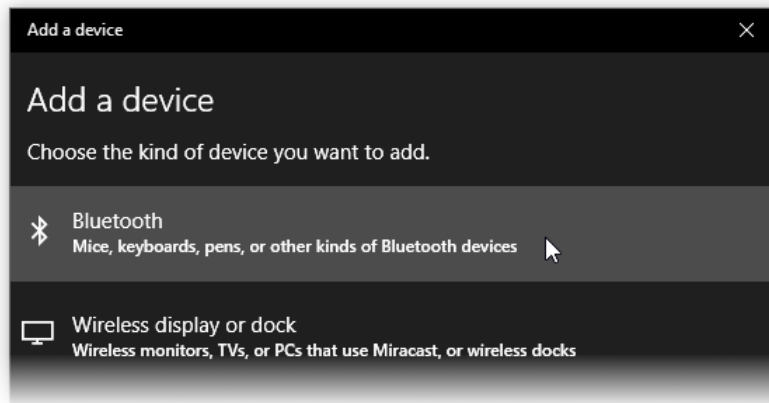
Make sure that “Advanced” is selected in “Device settings” - “Bluetooth devices discovery”. If Default is selected, change it to Advanced.

Click Add device.

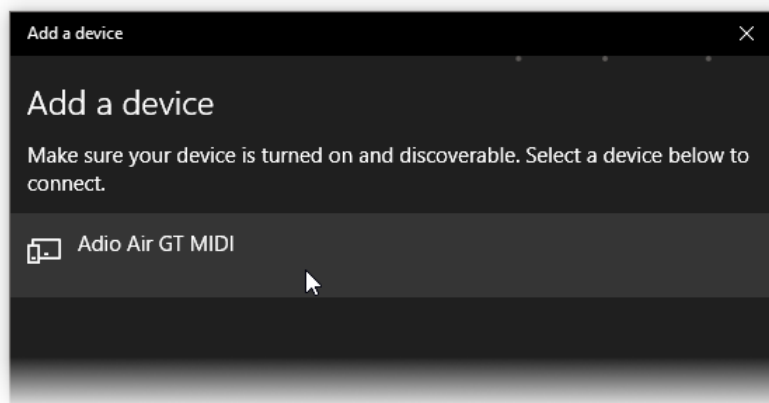
**TIP:** For Windows 10, selecting “Show Bluetooth Devices” displays the “Bluetooth & other devices” window. Click “Add Bluetooth or other device” and proceed to step 4.



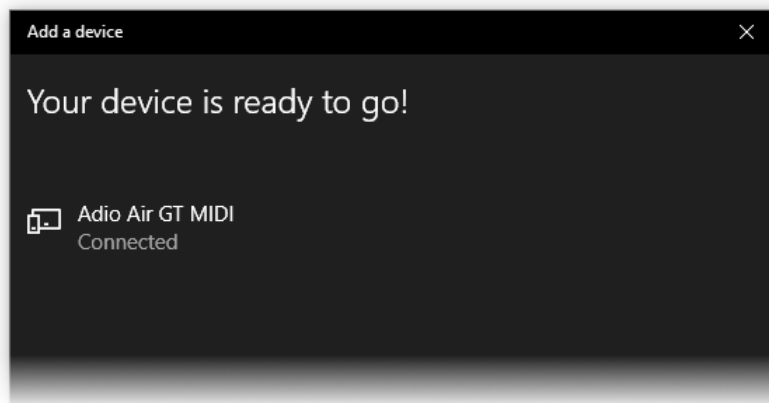
4. Select “Bluetooth” in “Add a device” window.



5. Select your device from the list.



6. Once the device is connected to Windows, "Connected" is shown and click "Done".



7. Launch the MIDI application such as Tone Room and the connection will be finished.

## Note

- This cannot be used by multiple MIDI applications simultaneously.
- If the Bluetooth MIDI device fails to connect to the PC when you launch the MIDI application, please remove the device from the list of the "Bluetooth & other devices" window or the "Manage Bluetooth devices" window and pair it again. If it still doesn't connect, see "Organizing registered MIDI devices" in the next section.

## Organizing registered MIDI devices

If 10 or more types of MIDI devices are already registered in Windows, new MIDI devices may not be recognized.

**Note:** Even if you have never connected more than 10 types of MIDI devices in the past, they may be registered as MIDI devices in the following cases, and the number of registered MIDI devices may exceed 10.

- If you have connected the same MIDI device to different USB terminals.  
Windows creates a driver for each USB port of the PC, even for the same MIDI device. If you connect your MIDI device to multiple USB ports, that device name will be registered multiple times.
- If you have connected a USB audio device.  
Some USB audio devices may be registered as MIDI devices.

Follow the steps below to organize the MIDI devices so that VOX BLE-MIDI Device is registered within the top 10 (midi0 to midi9).

1. Make space in midi0 to midi9 using MIDI Driver Uninstall Utility

**TIP:** For details, see the next section “MIDI Driver Uninstall Utility”

2. Uninstall the VOX BLE-MIDI Driver and install it again.
3. Start MIDI Driver Uninstall Utility again and check that VOX BLE-MIDI Device is registered in midi0 to midi9.

**Note:** Other devices registered in midi10 or later may automatically move and fill the space vacated in step 1. In that case, repeat steps 1 to 3 until VOX BLE-MIDI Device is registered in midi0 to 9.

## MIDI Driver Uninstall Utility

This is an application for checking registered MIDI devices and deleting unnecessary registrations.

**Note:** MIDI Driver Uninstall Utility cannot be used to remove VOX BLE-MIDI Device. To delete the registration of VOX BLE-MIDI Device, uninstall VOX BLE-MIDI Driver according to “VOX BLE-MIDI Driver installation/uninstallation”.

1. Launch the MIDI Driver Uninstall Utility.

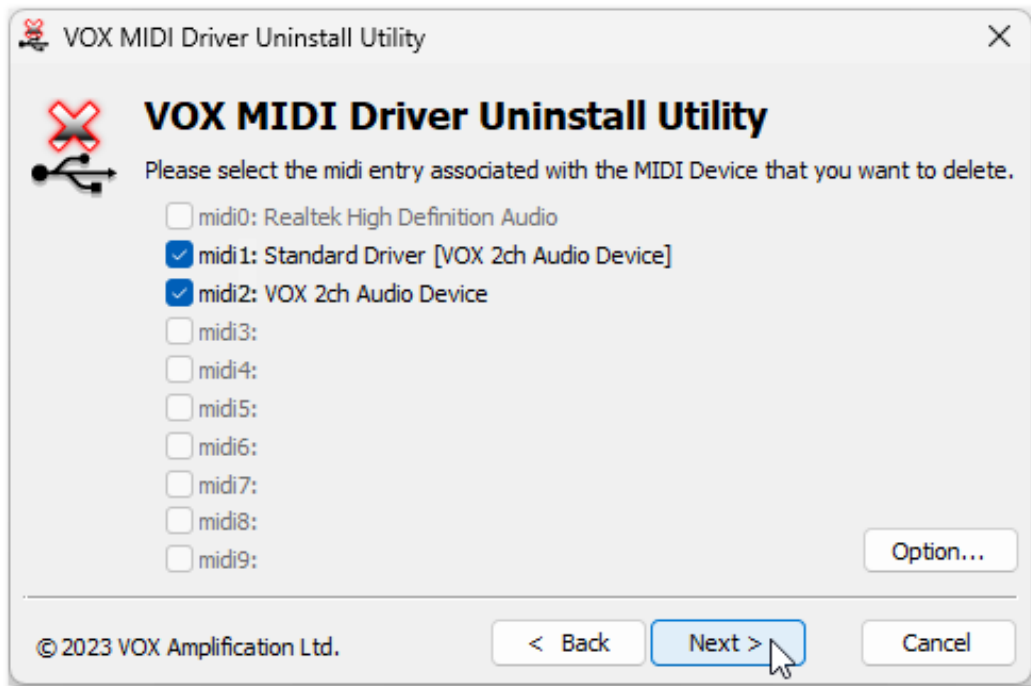
Start menu > All apps > VOX > MIDI Driver Uninstall Utility.

**TIP:** For Windows 10, Start menu > VOX > MIDI Driver Uninstall Utility.



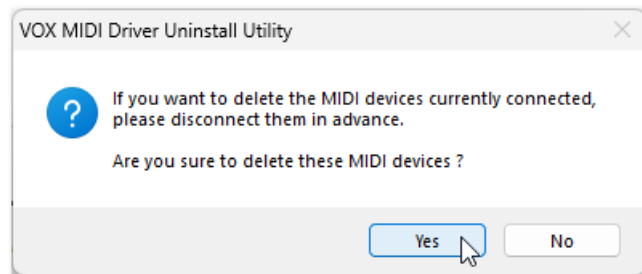
Click Next.

2. A list of currently installed MIDI devices will be displayed.  
Add a check mark only to the MIDI device you want to remove.  
Be aware that all MIDI devices with a check mark will be removed.

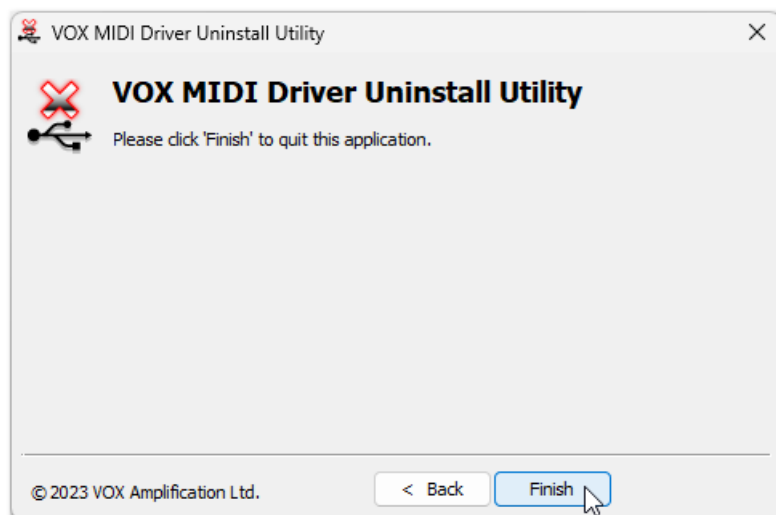


Click Next.

3. A dialog box will ask you for confirmation.



4. Click Finish to complete the procedure.





**Vox Amplification Ltd.**

1 Harrison Close, Knowlhill, Milton Keynes, MK5 8PA. UK

[www.voxamps.com](http://www.voxamps.com)